

Improving the Quality of PrEP Implementation for Adolescent Girls and Young Women in Eastern and Southern Africa

A Regional Think Tank

2nd March 2021

unicef  for every child

 The Global Fund

 **2gether
4SRHR**

 Sweden
Sverige

Aims and Objectives

The aim of the regional think tank and webinar series is to inform quality implementation and scale-up of PrEP Programming for AGYW in the ESA region as part of combination HIV prevention interventions.



Engage and convene diverse stakeholders



Generate implementation considerations



Document and disseminate key considerations



Share best practice, evidence, and lessons learned from implementation

What We Heard Last Session



There is a high level of acceptability to PrEP among AGYW, but barriers at an individual, community level and facility level negatively affect PrEP uptake and adherence.



A multi-pronged model which incorporates different service delivery platforms, located not only in healthcare facilities, but also within the community and other non-conventional locations are required



Broder social mobilisation, of families/communities to provide the enabling environment for PrEP use by AGYW is critical and can be supported by framing PrEP as a tool for positive health and wellbeing rather than by risk which can promote stigma/discrimination



There is an opportunity to empower community cadres (including CHWs, peers and others) to support community distribution and demand creation for PrEP

Delphi Survey for Consensus

Session 2: Service Delivery Platforms and COVID-19 Implications

Dear Colleagues,

Thank you for your contributions during session 2 breakout groups. Please review the implementation considerations below, and submit a response to each, you can either 'endorse' or 'reject' each implementation consideration.

Where relevant please place any additions, suggested changes or comments in the 'other' box.







Please reach out with any questions.

Many Thanks,
Organising Committee

<https://forms.gle/h4VJb49vxZDmSDrn6>

Google Drive

My Drive > AGYW PrEP Implementation for AGYW Think Tank ▾ 👤

Name ↑	Owner	Last modified	File size
 Session 1	me	Feb 18, 2021 me	–
 Session 2	me	Feb 18, 2021 me	–
 Session 3	me	Feb 18, 2021 me	–
 Session 4	me	Feb 18, 2021 me	–
 Session 5	me	Feb 18, 2021 me	–
 Supplementary Material	me	12:54 PM me	–

Agenda

Research Car Park

Literature Compendium

<https://docs.google.com/document/d/1fTKicCVmzbQK9JHspO8NzHz8fCpCtnRQ3m0bH2I9-wA/edit?usp=sharing>

Today's Agenda

Session 3: Healthcare System Considerations

10:00 – 10:15

**Welcome and
Introductions**

10:15 – 11:00

Breakout Groups

11:00 – 11:55

**Report Out and
Consensus
Building**

11:55 – 12:00

**Next Steps and
Close**



Breakout Groups: Healthcare System Considerations

Group 1: Integration with FP and SRH

Facilitator: Elzette Rousseau,
Desmond Tutu Foundation



Group 2: What is the minimum package?

Facilitator: Thato Chidarakire
NDoH, South Africa



Group 3: Assessing risk

Facilitator: Wanjiru Mukoma,
AVAC, Kenya



Group 4: Capacity building of providers

Facilitator: Regeru Regeru,
LVCT Kenya



PrEP integration with FP and SRH

Healthcare System Considerations

Elzette Rousseau

March 2021



HIV prevention in AGYW in Africa



- Current HIV prevention methods and services remain unsatisfactory or unavailable to AGYW in high HIV incidence areas.
- ECHO trial reminded world of high HIV incidence among women in southern Africa. Those high levels of HIV and STIs were found among women accessing FP services
- Sexual activities that increase risk for HIV also increase risk for unintended pregnancy – leading women to seek care in FP clinics

“The woman is one person: the woman has many needs. Women-centred services, capable of dealing with a range of issues under one roof and at one time, are needed.”

Jacqui Wambui, ECHO community advisory group member



AGYW preferences

Family planning services are already trusted by AGYW and accessed frequently and will therefore offer an ideal opportunity to reach AGYW at risk for HIV.

The evidence says that integrated PrEP/FP/SRH services:

- are desirable to AGYW
- potentially decreases stigma
- increase PrEP awareness and uptake
- PrEP can be entry point for comprehensive SRHS incl STI management
- fosters synergies and efficiency from public health perspective

Can we implement PrEP delivery from all platforms where contraception is provided? Can we provide contraception everywhere PrEP delivery happens?



Key Implementation Considerations

- Drawing from experience in this breakout room:
 - What are the key implementation considerations when it comes to PrEP integration into FP and SRH?
 - Can we rank and prioritize this list down to top 5 key considerations?
 - A spokesperson



Healthcare System Considerations for PrEP: Assessing AGYW Risk

Presented at the Virtual Think Tank on Improving the Quality of PrEP
Implementation for Adolescent Girls and Young Women in Eastern and
Southern Africa
2nd March, 2021

Wanjiru Mukoma, Jessica Rodrigues, Mitchell Warren



The guidance

WHO recommends PrEP for people at increased HIV risk as part of combination prevention

Implications for implementation

- Identify people at increased risk of HIV and offer PrEP
- Maximize population level impact
- Optimize scarce resources



- Programs have developed various of risk assessment tools and processes



The guidance

To evaluate substantial risk, WHO recommends considerations

Implications for implementation

- the local epidemiological context
- evidence on relevant risk factors for individuals and groups in that context
- individual assessment



Reviews of Risk Assessment Tools

- United Nations Children's Fund, Scoping Review of Tools for Assessing the Vulnerability and Risks of Adolescent Girls and Young Women in Eastern and Southern Africa, UNICEF ESARO. 2021. Nairobi.
 - 40 resources (22 tools) focused on addressing the HIV and SRHR vulnerability and risk of AGYW
- AVAC work - <https://www.prepwatch.org/risk-assessment-tools/>
 - catalogue and analysis of various risk assessment tools for AGYW



Purpose of risk assessment Tools

- Many tools are designed primarily to assess eligibility for or continuation on PrEP based on the generated risk scores
- Tools are also used to identify risk and initiate a provider-client conversation about risk
 - For AGYW these criteria for identifying risk include behavioural, biological and structural risk factors; :
 - Age of the AGYW
 - Age of sexual debut
 - Age of partner
 - Transactional sex
- Tools can help describe and understand a facility's or program's PrEP client population risk profile and changes in risk over time among PrEP users
- Can help programs determine whether or not they are reaching the AGYW at greatest risk
- Inform tailored interventions based



Risk assessment Tools are useful in determining AGYW PrEP eligibility and increasing understanding of self risk, but,

- Many tools have not been scientifically validated for use in risk scoring – would require major investments and the rigidity of such tools may make PrEP delivery and access harder
- There is considerable diversity in application of the risk assessment tools
- Tools may screen out the most vulnerable due to discomfort or stigma associated with disclosing why AGYW are at risk
- Risk assessment tools are only one part of process to identify the most at risk AGYW

“it is difficult to identify risk without creating new risk for the young woman”.



Recommendations for improving AGYW risk assessment in programs

- Apply risk assessment tools within a comprehensive approach to raising awareness of risk among AGYW and identifying those who will actually use PrEP
 - designing risk assessment tools to assist potential PrEP users to build an accurate understanding of their own risk
 - using both provider-led and client –administered risk assessment - *“A better approach (to risk assessment) is to put the tool in the prep user’s hand, for them to reflect on “is this (oral PrEP) for me” (AVAC analysis)*
 - tools that support all aspects of the program, not just to assess risk - monitor changes in risk over time among AGYW on PrEP; Measure other indications of risk, such as STIs, geographical location, age
 - tools that help ongoing program decision making
- Ensure that tools are based on an understanding of and adapted to the local context of vulnerability and risk - working with the AGYW and broader community
- Move away from language of “PrEP is for those at risk” to a more positive frame promoting “wellness” and “taking control”
- Standardizing AGYW tools, definitions and measurement of core indicators
- Assess impact of tool use for AGYW in terms access and effective use of PrEP



Acknowledgments

- United Nations Children's Fund, Scoping Review of Tools for Assessing the Vulnerability and Risks of Adolescent Girls and Young Women in Eastern and Southern Africa, UNICEF ESARO. 2021. Nairobi.
- AVAC - <https://www.prepwatch.org/risk-assessment-tools/>



Discussion

- What have been your experiences or observations of the use of risk assessment tools for AGYW in program implementation? What works /doesn't in your context?
 - Rapporteur to report back



Offering PrEP to Adolescent Girls and Young Women

Minimum package of services

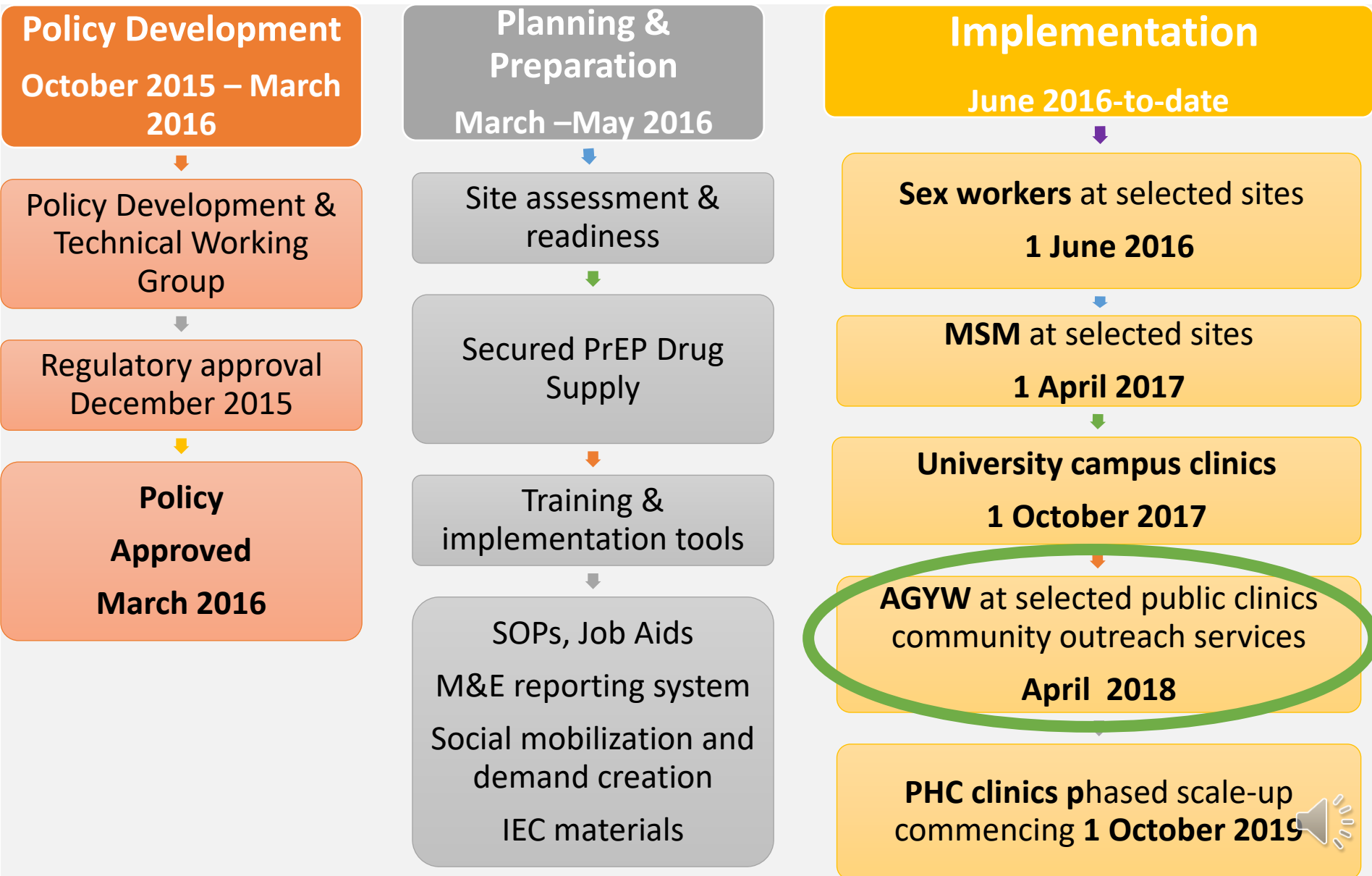
Dr Thato Chidarikire
2 March 2021



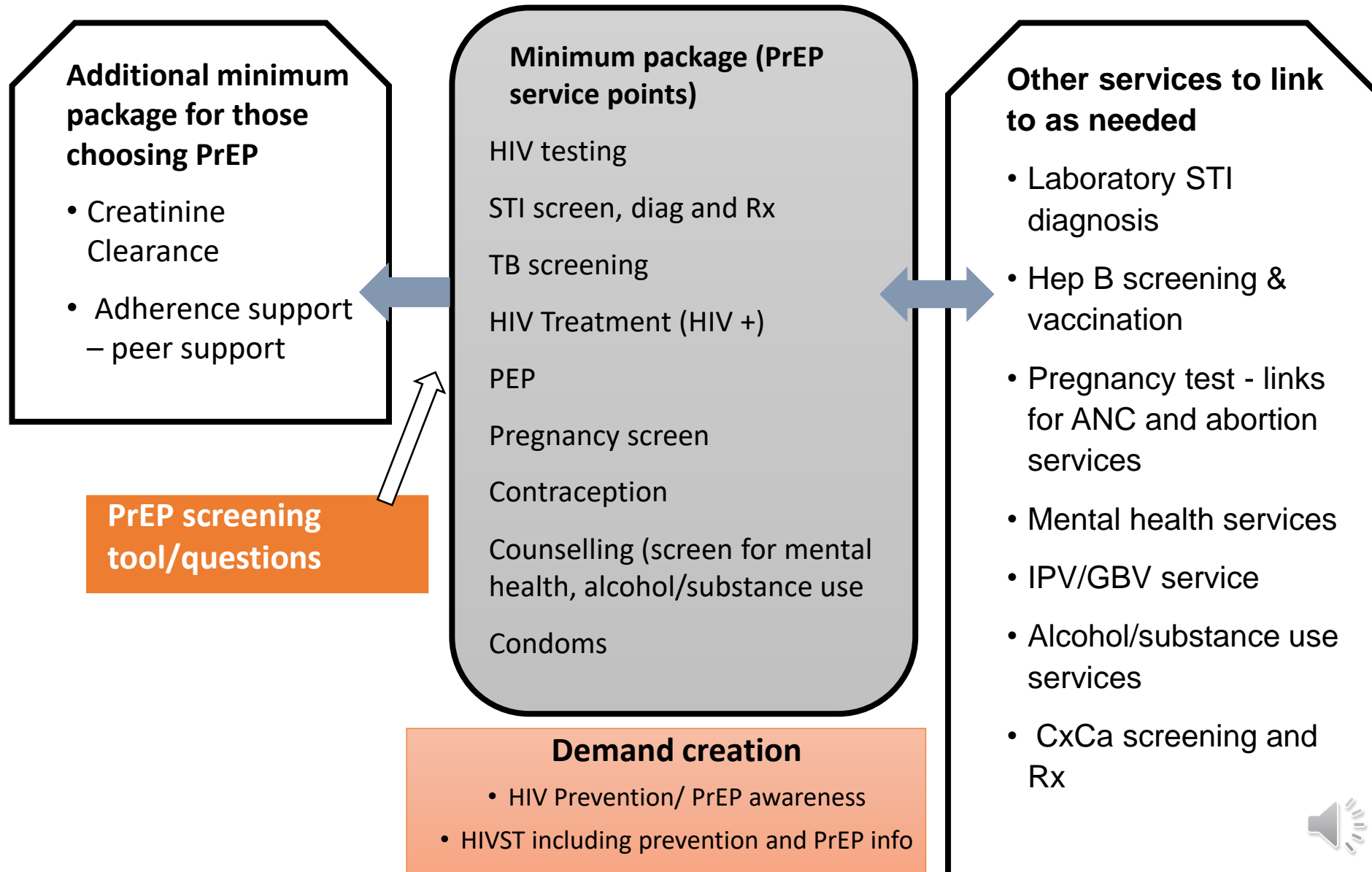
health

Department:
Health
REPUBLIC OF SOUTH AFRICA





In South Africa facilities offering PrEP are required to offer a Minimum package of services



Core tenets of oral PrEP provision for young people

Oral PrEP part of a comprehensive package of interventions

A full package of HIV prevention, treatment, and sexual and reproductive health services must be offered, of which oral PrEP is an additional prevention option

Oral PrEP for AGYW delivered through a selected health facility

Services provided through a mobile clinics or outreach must be part of outreach strategy from a fixed facility

Clinics reporting through TIER.NET

Standardised reporting through PrEP module on TIER.net reporting becomes available since March 2019.

Demand generation amongst AGYW

Demand generation, social mobilisation, and community education essential for reaching young people.



PrEP Implementation Model for AGYW

Public Health Facilities

- Fixed Facility –PHC Clinic
- Roving team anchored at the PHC Clinic facility to work in surrounding area
- Outreach activities
- Demand generation CBO's/partner organisations
- Youth linked to fixed sites or roving units to access services

Services Offered

Clinic and outreach services will provide:

- HIV testing services
 - ARV's issued to those testing positive
 - Combination prevention interventions
- Screening for and initiation of PrEP HIV negative persons
- Primary health care services
 - Youth zone activated and functional
 - PrEP offered as part of SRH services



she conquers

A campaign to empower adolescent girls and young women across South Africa



Empower Protect Advance



Decrease new HIV infections in girls and young women



Decrease teen pregnancies



Keep girls in school till matric



Decrease sexual and gender based violence



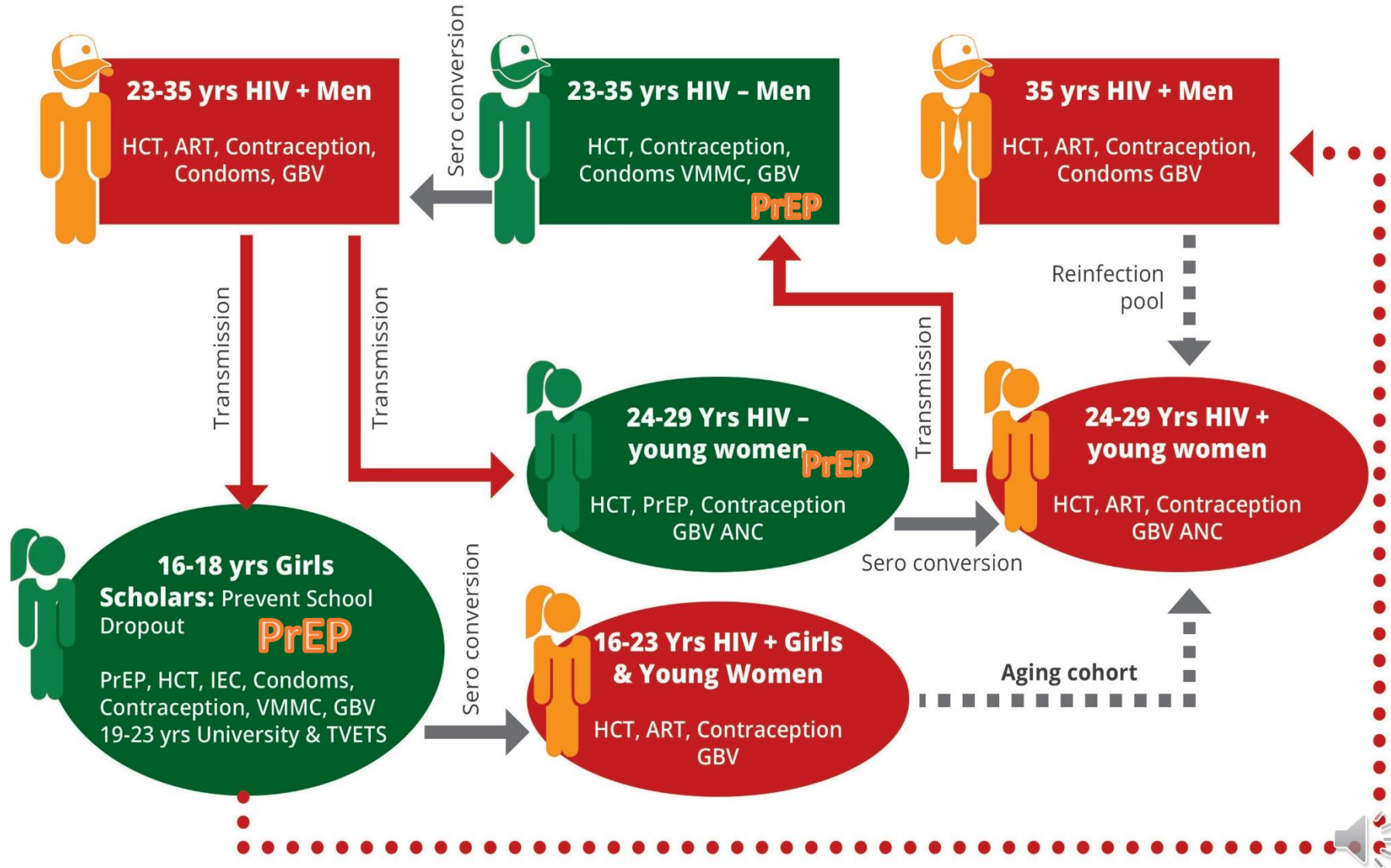
Increase economic opportunities for young people





TRANSMISSION MODEL DIAGRAM

FOR THE NATIONAL CAMPAIGN FOCUSING ON GIRLS AND YOUNG WOMEN AGED 15-24

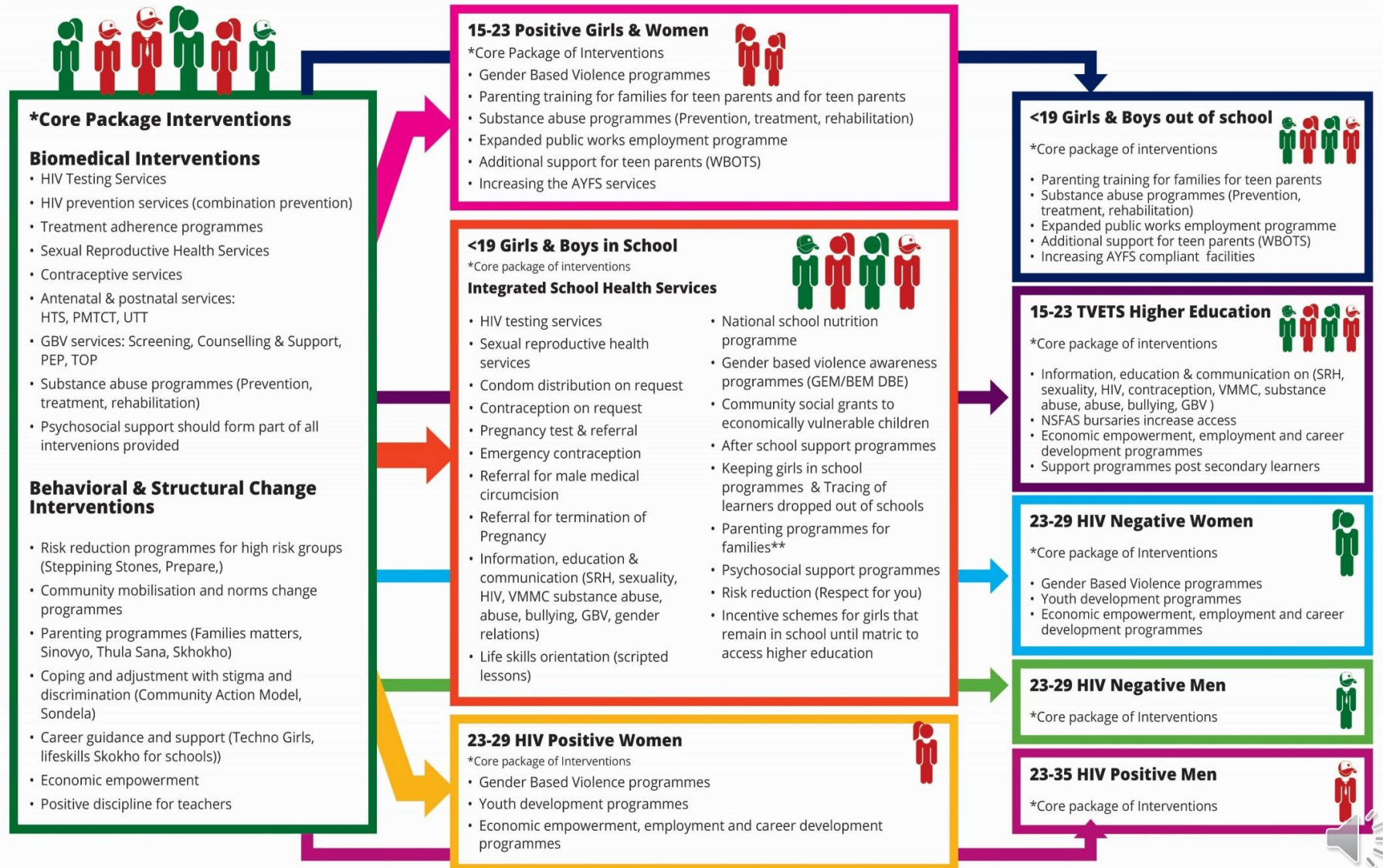




CORE PACKAGE OF INTERVENTIONS

FOR THE NATIONAL CAMPAIGN

FOCUSING ON PREVENTION of HIV AND TEENAGE PREGNANCY AMONG YOUNG WOMEN AGED 15-24





PrEP is offered as part of the YouthZone essential service package



health

Department:
Health
REPUBLIC OF SOUTH AFRICA



YouthZone Package of Services



An integrated package of psycho-social support, health promotion, counselling, life skills and sexuality education, and promotion of healthy lifestyles services



health

Department:
Health
REPUBLIC OF SOUTH AFRICA



YouthZone

Package of Services



Sexual and reproductive health & rights

- Contraceptives (full range as per the DoH guidelines)
- STI prevention, screening & management
- TOP counselling, information and referral



Pregnancy support

- Pregnancy testing
- Early booking
- Antenatal care
- Referral for psycho- social support
- PMTCT

Healthy lifestyle

- Nutrition
- Dietary guidance
- Exercise

HIV services

- HIV Testing Services
- Antiretroviral treatment
- **HIV Prevention package (including PrEP and PEP)**
- Treatment adherence support
- **PrEP**



YouthZone

Package of services



Screening, management or referral for

- Substance abuse
- Violence and sexual assault
- Mental health problems
- Obesity (BMI)
- Malnutrition



Immunization

- Td at 12 years
- HPV vaccination (age 9-12 years old)

Violence and sexual assault

- Screen
- Psychosocial support
- PEP, STI screening and emergency contraception

Screen and treat injuries and minor ailments



health

Department of Health
REPUBLIC OF SOUTH AFRICA



Key Issues for Discussion

1. What adolescent and youth HIV prevention & SRH programmes/interventions do we recommend to be included together with PrEP ?
2. What models, interventions, and/or approaches should we consider for the delivery of this minimum package of services ?
3. How do we select the most effective approaches?
4. What do we need to do to take these to scale?
5. How will we measure the impact of the delivery of this package?
 - Indicators
 - Health outcomes
6. How do we strengthen capacity of health facilities, partners, NGOs and CBOs to deliver the minimum package?
7. How do we include meaningful youth participation in the above?
8. **What are the key priority recommendations?**



Group Exercise



You will automatically be moved to your designated breakout room

Please save your notes in the google drive or e-mail to Alice Armstrong (Aarmstrong@UNICEF.org)

10:15 – 11:00

Breakout groups

Next Steps

1

Join us for Session 4

Session 4: Emerging Areas of Interest

Thursday 4th March 2021

10:00 am – 11:30 am SAT

unicef  | for every child